

Global Goals for Cities Baseline Assessment

City Profile: Klaipėda

Key Facts

Klaipėda, Klaipėda County,
Lithuania.

Size: 98 km²

Demography:

Population size: 149 046 (2021)

Population Density: 1574,8
people/km²

Population Growth rate / decline:
0,1% (Annual)

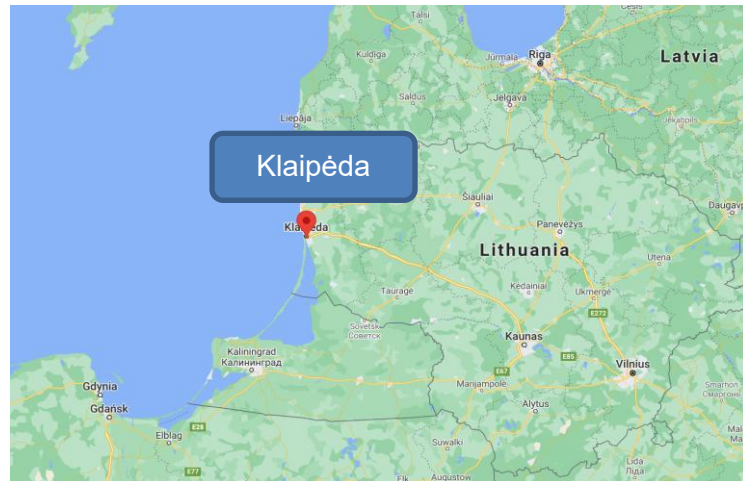
Age profile: The average age in
Klaipėda is 42 years. The share of
working age people (15-60 years) is 60.2% and elderly (60 years and above) 22.4%.

Ethnic minorities: The largest ethnic groups besides Lithuanians are: Russian (19,6%, the highest share in Lithuania), Ukrainians (1,9%), Belarusian (1,7%).

History and cultural heritage:

Klaipėda was founded in the 13th century. Under the Treaty of Versailles after World War I, Klaipėda and the surrounding Klaipėda Region (Memel Territory) were detached from Germany and made a protectorate of the Entente States, and the French became provisional administrators of the region. The Klaipėda Revolt carried out on 15th January 1923 put Klaipėda back as part of Lithuanian Republic. Klaipėda was later occupied by Germany in 1939, while after World War II, the city became a part of Soviet Lithuania, until its fall in 1991. As a result of its history, the urban landscape in Klaipėda has “three faces”: an old town, soviet period buildings and modern suburban homes.

The city is located 311km northwest of the capital of Vilnius, to which Klaipėda is well connected by highway. The international airport Palanga airport is located 25km from the city, which before the Covid-19 pandemic had daily flights to both Riga and Copenhagen.



Climate & Environment

Klaipėda is a port city, located where the Curonian Lagoon and River Danė meet the Baltic Sea. Klaipėda faces these environmental risks:

- flooding due to heavy rains in summer-autumn seasons and not perfectly working rain drain systems,
- air pollution due industry and port activities and high percentage of use of individual cars.

Economy:

*EU regional NUTS 2 classification*¹: Transition region

Main sources of prosperity: Port activities, Shipbuilding, Shiprepair, Logistics, Industries, Trade, Tourism, Bioeconomy, Creative Industries. The Port has a growing annual turnover, and tourism is also a growing economic sector.

- There were 6664 enterprises operating in Klaipėda City at the beginning of 2021. The highest number of them were operating in field of wholesale and retail trade, repair of motor vehicles (1294), transport and logistics (801), other services (711), industries (527), professional, scientific and technical activities (653), construction sector (638) etc.;
- Unemployment rose to 11,6 percent during quarantine (2020). It used to be around 6-7 percent (2018-2019);
- Foreign direct investment amounted to 7342 Eur per capita in 2019, material investment - 7883 Eur per capita.

¹ For classification of EU regions with regards to the EU Regional Policy from 2014 to 2020, the map is available at this link here: https://ec.europa.eu/regional_policy/sources/graph/poster2014/eu28.pdf

Key Strengths and Challenges - the 5 Dimensions (Ps) of the 2030 Agenda

For each dimension (P) of the 2030 Agenda – People, Prosperity, Planet, Peace and Partnership – partner cities reported one key strength and one key challenge, with a related photo (where they chose to). They were also presented with “possible data points” based on indicator examples from existing SDGs indicator frameworks for local and regional governments (namely: the OECD local framework for SDGs², ISO 37120 - Indicators for Sustainable Cities³, and the JRC Handbook on Voluntary Local reviews⁴). The sample selection (which did not include technical definitions) was primarily intended to inspire partners to start thinking about relevant indicators and data for the Ps, SDGs and their targets. Partners were encouraged to include some data points per P, drawing on existing data sources and indicators used in the city. These are presented in the data following the Strengths and Challenges per P, as included by the city.



² “Measuring the distance to the SDGs in regions and cities”, OECD online tool, available at: <https://www.oecd-local-sdgs.org/>

³ See the World Council of City Data report on ISO and the SDGs on [Basecamp](https://www.basecamp.com/).

⁴ Siragusa, A., Vizcaino, M.P., Proietti, P. and Lavallo, C., *European Handbook for SDG Voluntary Local Reviews*, EUR 30067 EN, Publications Office of the European Union, Luxembourg, 2020, ISBN 978-92-76-15402-0, doi:10.2760/257092, JRC118682. Available at: <https://publications.jrc.ec.europa.eu/repository/handle/JRC118682>

People



Strength: Klaipėda has universities, universities of applied sciences and academies. The City Municipality is dedicating special attention to youth policy, and is announced European Capital of Youth in 2021.

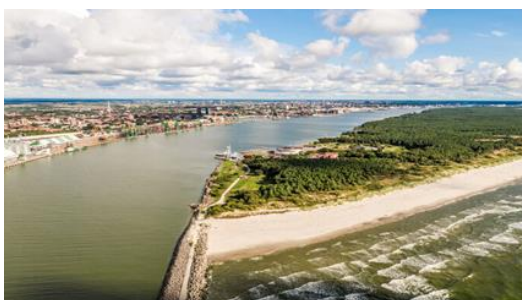


Challenge: Klaipėda's population is growing older, young people are often choosing studies in the capital Vilnius or abroad.

Possible Data points (if available)

- Share of people living at risk of poverty is 19,6 percent in Klaipėda County (2020) (SDG1);
- Share of adults who are engaged in active physical activity at least 30 min. 5 days a week or more often is 35,2 percent (2018) (SDG2);
- Average life expectancy is 75,51 yo (2020) (SDG3);
- Share of population that completed secondary education (and upper) - 75,7 (2011 population census) (SDG4);
- Share of women among all elected representatives in the City Council - 26,7 percent (2019) (SDG5)

Prosperity

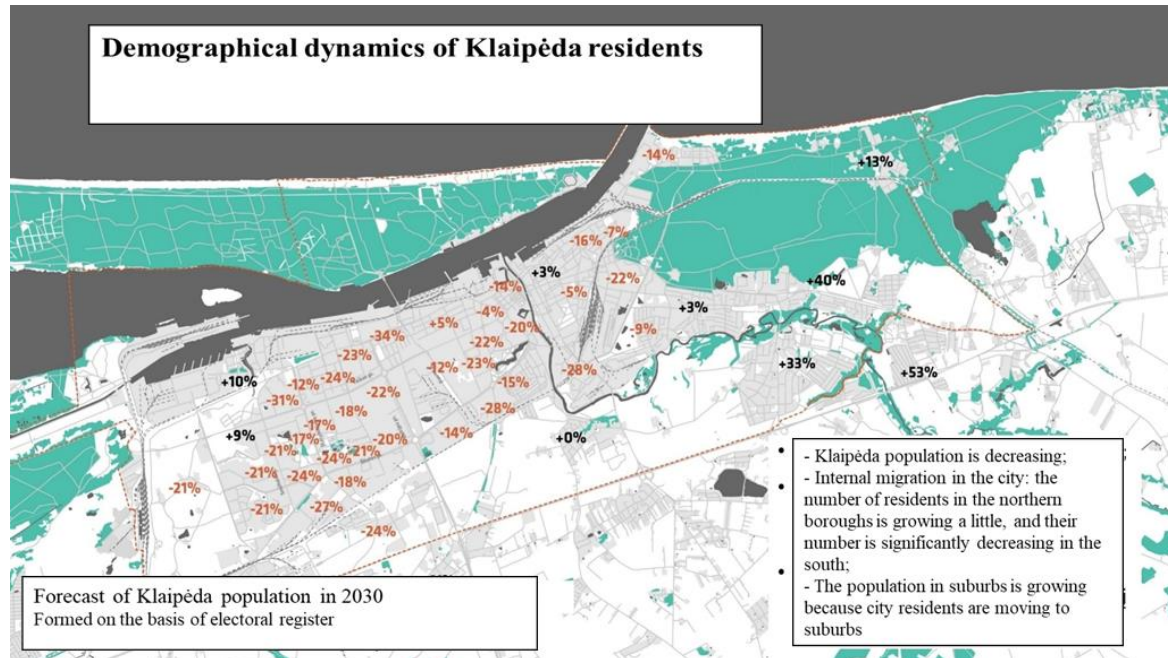


Strength: Klaipėda is a green city with a lot of parks inside its territory and forests in Curonian Spit and Melragė-Giruliai Forest.

Challenge: Klaipėda has a growing port and industry, which constitutes a challenge to the local residents in terms of smell and air pollution. This is contributing to internal migration out from southern parts of the city near the port, to northern parts of

the city as well as to surrounding areas, contributing to urban sprawl. This migration pattern further makes the provision of social services like childcare and education a challenge for the city of Klaipėda, as families from newly constructed areas commute into the city to access

schools and kindergartens, causing traffic congestion. The detailed analysis of internal migration is shown below.



Reconciling different land use (residential, industry, port, cultural heritage, etc) and socio-economic activities is thus a core challenge for Klaipėda, some of which remains outside the direct control of the city (e.g. the port).

Possible Data points (if available)

- Renewable energy as a percent of total energy consumption in central heating system - 90 per cent (2019) (SDG7);
- Unemployment rate, if possible disaggregated by e.g. gender, age, minority background (SDG8) -11,6 percent (men -10,8; women - 12,3 (2020);
- Enterprises in construction, industry and services - 9.57 percent (2021)(SDG9);
- Share of local population with tertiary education, by education field and gender - 26 percent (women - 28,9 percent, men - 22,6 percent (2011 population census (SDG10);
- Waiting time for persons and families waiting for social housing rent (years) -7 (2019)
- Built up area - 35,54 km², residential area - 21,76 km² ha;
- Share of commuters using a travel mode to work other than a personal vehicle - 35 percent (2017) (SDG11).

Planet

Strength: Klaipėda is a compact city with all developed infrastructure and has a small but beautiful Old Town.



Challenge: As explained above, local residents are moving away from the municipality to live in suburbs. As a consequence, the city is losing its population and budget revenue, while facing traffic problems and pressure on social services.



Possible Data points (if available)

- Percentage of city's wastewater receiving centralized treatment - 99 percent (2021) (SDG6, SDG14);
- Municipal waste per capita (include recycling rate if available) - 0,41 t (2019) (SDG12);
- CO₂ emissions in the city by sector (housing, transport, etc.) (SDG13);
- Area of greenery performing a protective function per capita (sq. m) - 29 (2019) (SDG15)

Peace

Strength: There have been no serious ethnic conflicts in the last two decades, despite the city has the greatest number of Russian speaking population in Lithuania (19 percent of population).

Challenge: Population turnout in local elections is low. Protest against government actions are happening Klaipėda is close to the Kaliningrad Region, Russian Federation. There is a serious threat of illegal migration and smuggling.

Possible Data point (if available)

Participation rate in latest local elections - 47,9 (2019);

Citizens' satisfaction survey results (if available) - 8,3 out of 10 points (SDG16)

Partnership



Strength: Klaipėda has a long time tradition of stakeholder engagement in the process of preparation of various documents, while NGOs are delivering about 20 percent of public services. The city has just started a citizen budget initiative and emphasizes processes of public participation in its activities, involving citizens to participate and to co-create public policies.

Challenge:

Klaipėda still has a low percentage of population participating in municipal council elections and public life, people easily trust new politicians as “saviors”.



Possible Data points (if available)

Share of population with broadband internet connection - no statistics, but it is very high;
 Number of co-creation/cooperation platforms with stakeholders, created/initiated by the city - 2 (2021) (SDG17)

Current Policy Context & Enabling environment

The current policy framework for the SDGs

Klaipėda’s recently adopted long-term *City Strategic Development Plan 2021-2030* provides the overarching vision for Klaipėda to be “Vibrant, Smart and Inclusive”, with the mission to *provide the city community with services of the best quality that meet the needs and expectations expressed by stakeholders*. The image below shows the three strategic priorities of the plan, including the city’ investment plan as a cross-cutting enabler. Each strategic priority has its own targets and indicators. In addition to the strategic plan, the master plan for spatial planning is currently being developed.



The long-term strategic development plan is complemented by a 3-year strategic action plan, which is yet to be made for 2021-2023. Subsequently, the annual financial plan allocates funds to 12 key programmes in the city.

Box 1: Political commitments by the current local government

Year 2019-2023:

1. Environment protection;
2. Sustainable development of City and Port;
3. Developing modern City infrastructure;
4. Revitalization of Old Town;
5. Development of Education system;
6. Improving the quality and accessibility of health and social services;
7. Development of culture, sports services and youth policy;
8. Transparent and efficient self-government.

When it comes to integrating the SDGs into the strategic planning context, the city has made some preliminary activities, including raising awareness and involving citizens. Namely, in light of the Youth Capital year, young residents were involved in a Hackathon, contributing with ideas on actions for the SDGs.

One key challenge in the political context of Klaipėda is that the city council members are in disagreement around key priorities when it comes to sustainable urban development, with sustainable development sometimes viewed as “only green”, or economic

development seen as only interested in expanding the port and industrial activities. The current local government (majority) has only 15 out of 31 seats in the city council.

The broader “enabling environment” for applying a participatory and integrated approach to the SDGs in Klaipėda

In Lithuania, the municipalities are the only self-governing government at sub-national level. The regions - or counties - serve as statistical and territorial units. There are currently 10 counties and 60 municipalities in Lithuania. The municipalities perform functions delegated by the state and independent functions, the latter of which are wide-ranging, from primary health care and social allowances to maintenance of roads and public areas, and water and waste management⁵. Regional Councils - created in 2021 - are formed by elected representatives delegated from each municipal council, and are responsible for developing regional strategies and allocating EU regional development funds. Klaipėda Region consists of 7 municipalities: Klaipėda City, Klaipėda District, Kretinga District, Palanga Municipality, Neringa Municipality, Skuodas District, Šilutė District. Klaipėda Region Council will develop a strategy to be agreed by the municipalities in the region

In Klaipėda, the multi-level governance landscape is rather complex when it comes to fostering integrated sustainable urban development. Some of the key determinants of the city’s future development path - namely the port and the associated special economic zone with many polluting industries - are of key national interest and fall largely outside the remit of control by the city. For example, the municipality does not own the land where these activities are conducted, and occupies only one seat in the port authority. In 2019-2020, there were strong citizen protests against some of the industries located in the port and special economic zone, pressuring them to take responsibility for cleaning the land polluted by their activities.

In other service areas, such as transport, heating, water and waste management, territorial cooperation with the county and surrounding municipalities are tempted, with mixed results. As mentioned in the Prosperity dimension above, “wild areas” with new private housing development in surrounding municipalities puts additional pressure on Klaipėda’s social and transport infrastructures. In view of the next EU programming period, the national government faces some pressure to enhance the role of regional development policy in Lithuania, which may help to improve the situation.

On the international level, Klaipėda City has long experience in participation in EU and similar cooperation projects since the 1990s, including URBACT networks, such as Gen-Y City – Get into the Swing of the City; Thriving Streets: Designing mobility for attractive cities. The city reports to get its most important information about localising the SDGs from guidance and strategic documents from a National authority/agency, as well as participation in international city networks and information from international organisations⁶. For example, the Lithuanian Department of Statistics provides National indicators of SDGs and some basic information about SDGs can be found on the website of Lithuanian Ministry of Environment.

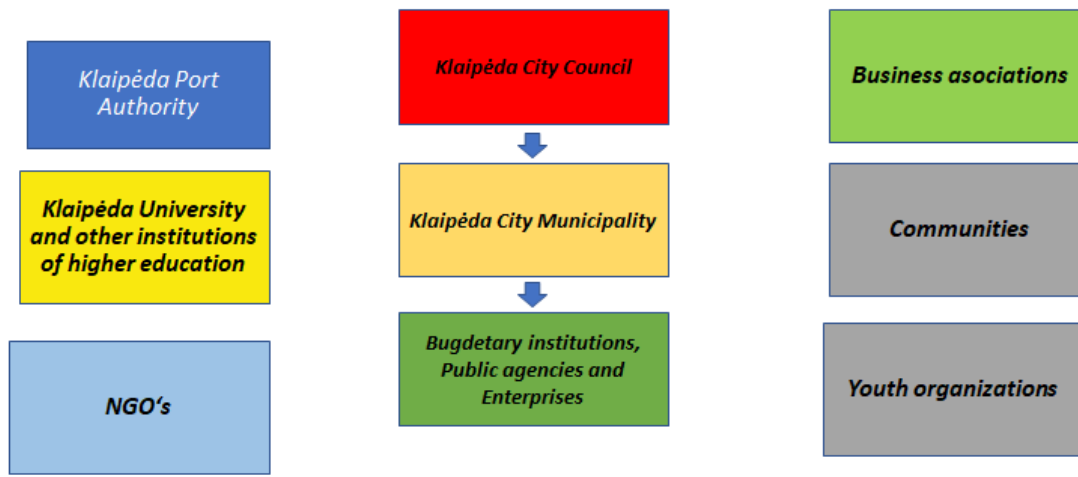
⁵ European Committee of the Regions online Portal, “Greece”, Accessed 3 June 2021, available at: <https://portal.cor.europa.eu/divisionpowers/Pages/Lithuania-Introduction.aspx>

⁶ URBACT Pilot Network on SDGs in Cities - Kick-off survey.

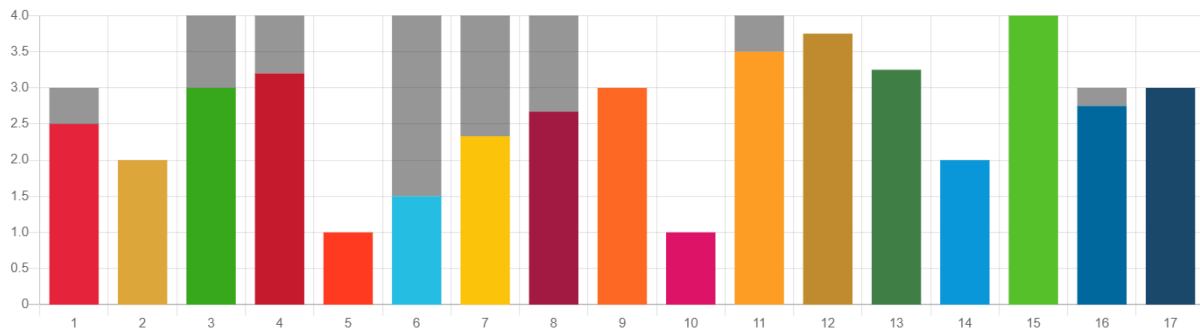
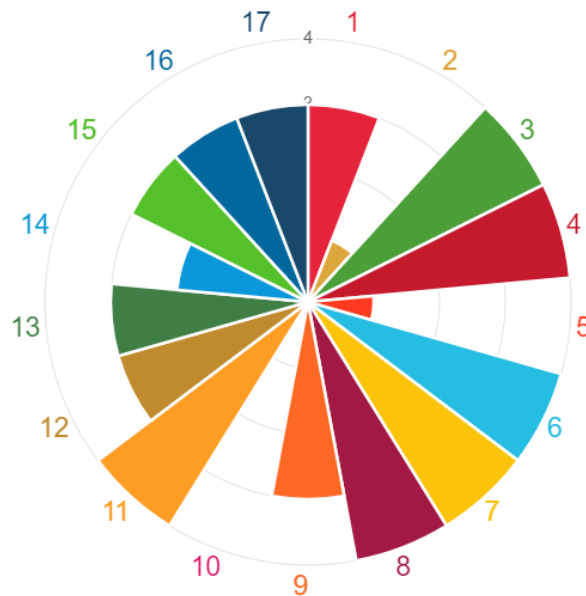
Key Stakeholders for the URBACT Local Group

Klaipėda used its existing stakeholder map as a starting point for identifying potential ULG members (see image below). In addition, the local team is considering to involve the regional level more strongly in the process, hoping to spread awareness about the holistic nature of the 2030 Agenda and the SDGs.

Klaipėda's Stakeholder Map



SDGs Priorities & Gaps Analysis (RFSC self-assessment results)



A. Reflection: Towards potential focus areas in the Integrated Action Plan

Overall reflection

- Are the priorities in your current policy framework addressing all the SDGs, or are some goals excluded? If some goals are excluded, why is this the case?

Most of SDG's are part of our City Strategic Development Plan 2021-2030. But some goals are excluded - we have almost no links with "Zero Hunger (SDG2)", because there are no problems of hunger in our city (of course we have programs supporting low income people and families) and Klaipėda has no agriculture in its territory, agriculture is more common for rural areas around the City, so you can find goals connected to modern agriculture in Klaipėda County strategic documents. Our strategic development plan also has just a few measures linked to Reducing Inequalities (SDG10), because it is more the prerogative of the central government. We also have less measures for Life on Land (SDG15), because it's more dedicated to rural areas, forest and land use for agriculture purposes.

- What criteria did you use for rating goals as higher or lower priority?

If we have more measures planned for this priority we are rating it higher.

- Does the result reflect the key challenges and strengths of the city, like those highlighted in the photo essay or other contextual analysis? Why? Why not?

Yes, of course. Our Cities strategic development plan is prepared with the purpose to overcome the challenges.

Priorities vs. Actions

- Are there big differences in the number of actions behind each goal?

Yes, some goals have more actions planned in our strategic development plan and some have less actions.

- Are there any gaps between the priorities and the scored impact of the actions behind each goal (e.g. high priority-few actions or vice versa)? What may be the reason for this?

No

Insights for the IAP and ULG

- What insights can you take from the results when thinking about future priorities and actions for the Integrated Action Plan (IAP)?

We can see what we can change in our strategic plans, what we can add to our monitoring indicators.

- Think about the reflections you just made above and your preliminary stakeholder analysis for the ULG. Are there any other potential stakeholders that may contribute to filling any gaps or reinforcing priorities in the work on the future IAP?

Yes, there are. People from universities, youth organizations could help us with some equality issues.

Opportunities and Challenges for localising the SDGs in the city

The below opportunities and challenges refer to those mentioned by the cities in the preparatory survey for the kick-off of the network. They are based on experienced and or anticipated opportunities and challenges when it comes to localising the SDGs in the city. In the context of this analysis, they provide some additional insights into what may be the leverage points and risk factors to take into account in the future development of the IAP.

Opportunities	Challenges
<ul style="list-style-type: none"> ● Disseminating information about SDGs to local NGOs and communities, explaining the holistic approach. ● Working with local politicians trying to broaden their horizons, to change their attitude to strategic planning documents, to make them realize that economic development must be balanced. ● Working with local business and Port Authority trying to explain the city has to be developed in a sustainable way. 	<ul style="list-style-type: none"> ● To explain the importance and the meaning of the SDG's to the politicians and society. ● To integrate the principles of SDGs into existing strategic plans and monitoring system.